

Figure 12.1 Limerick CDP Landscape Character Areas

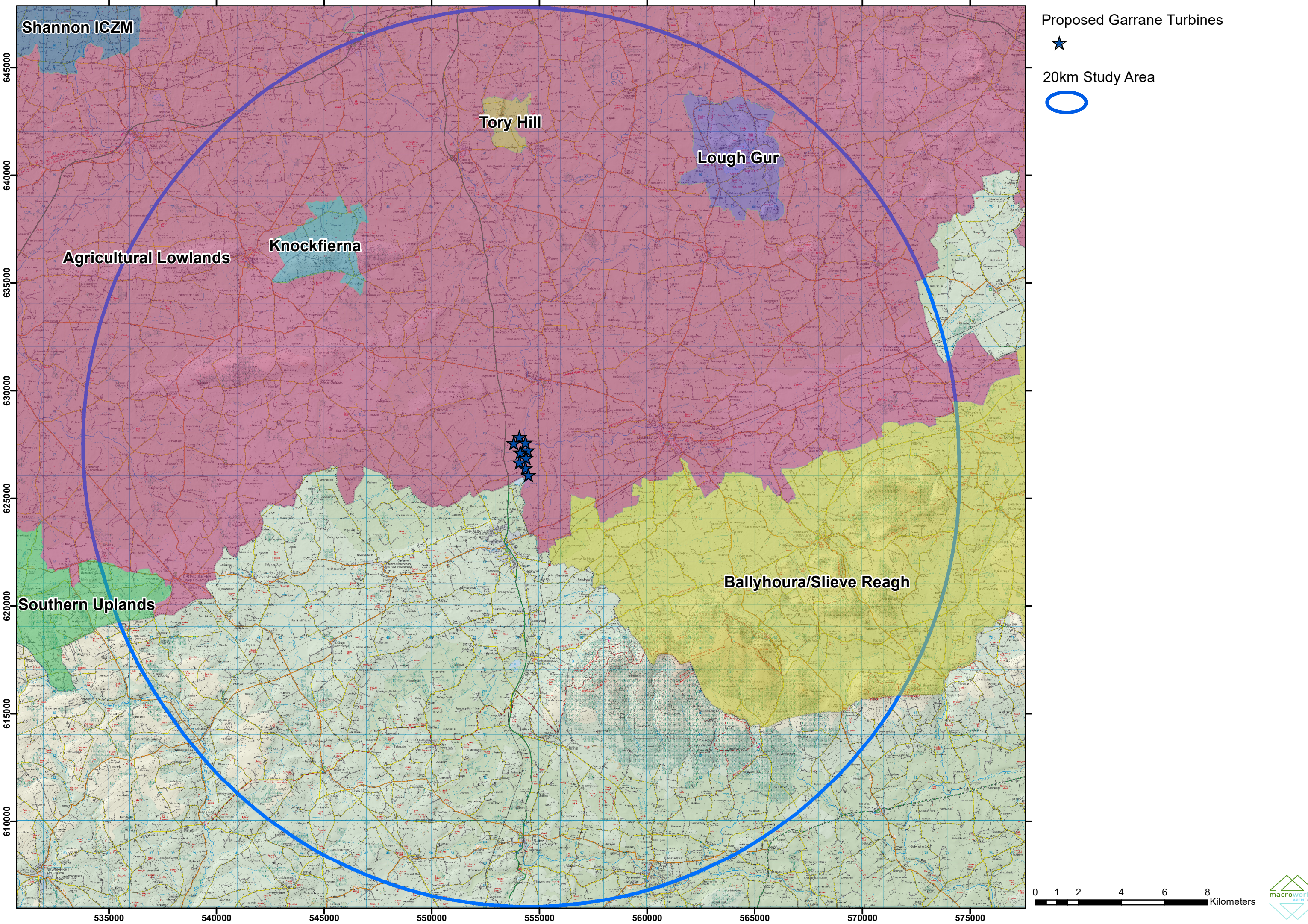
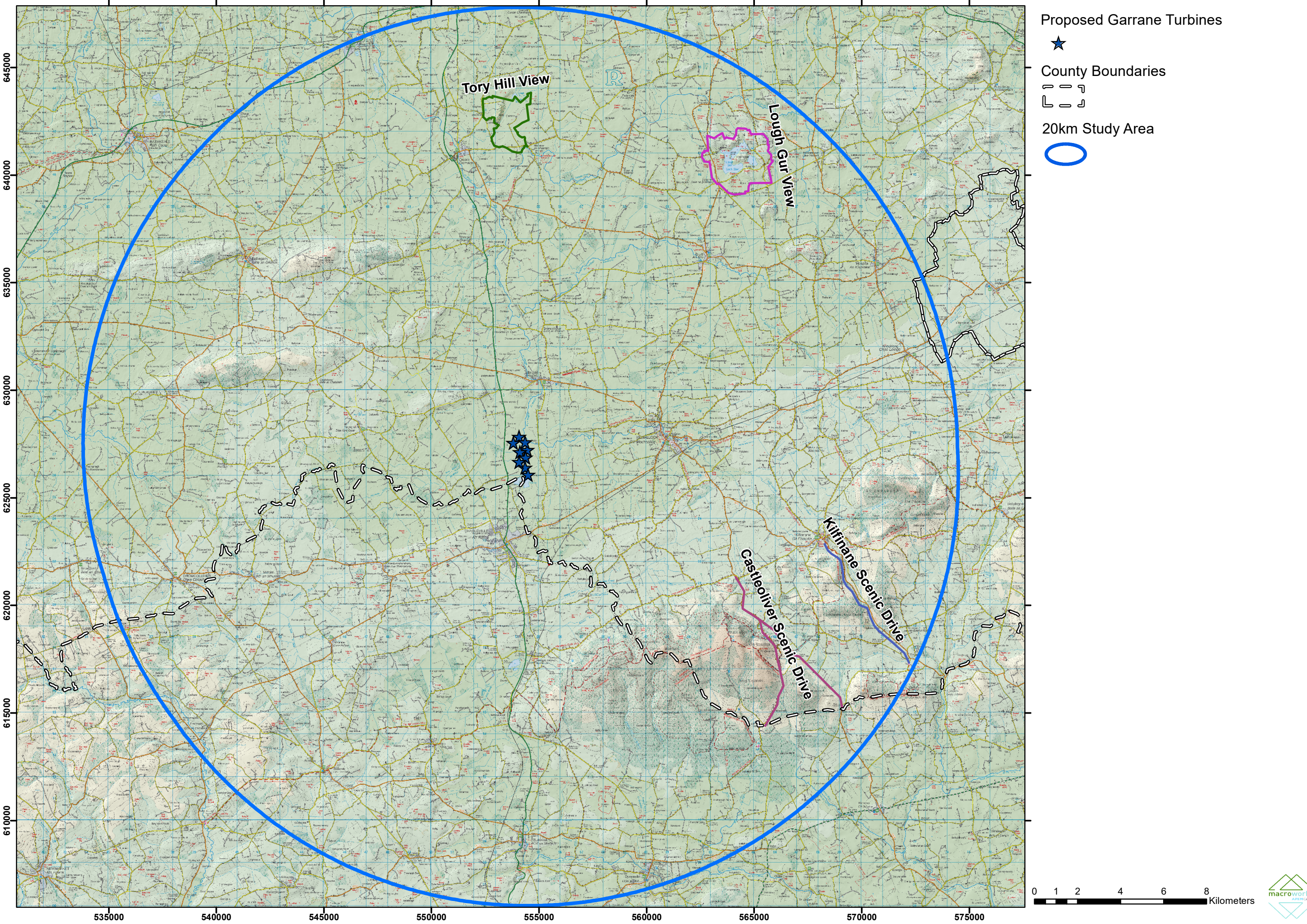
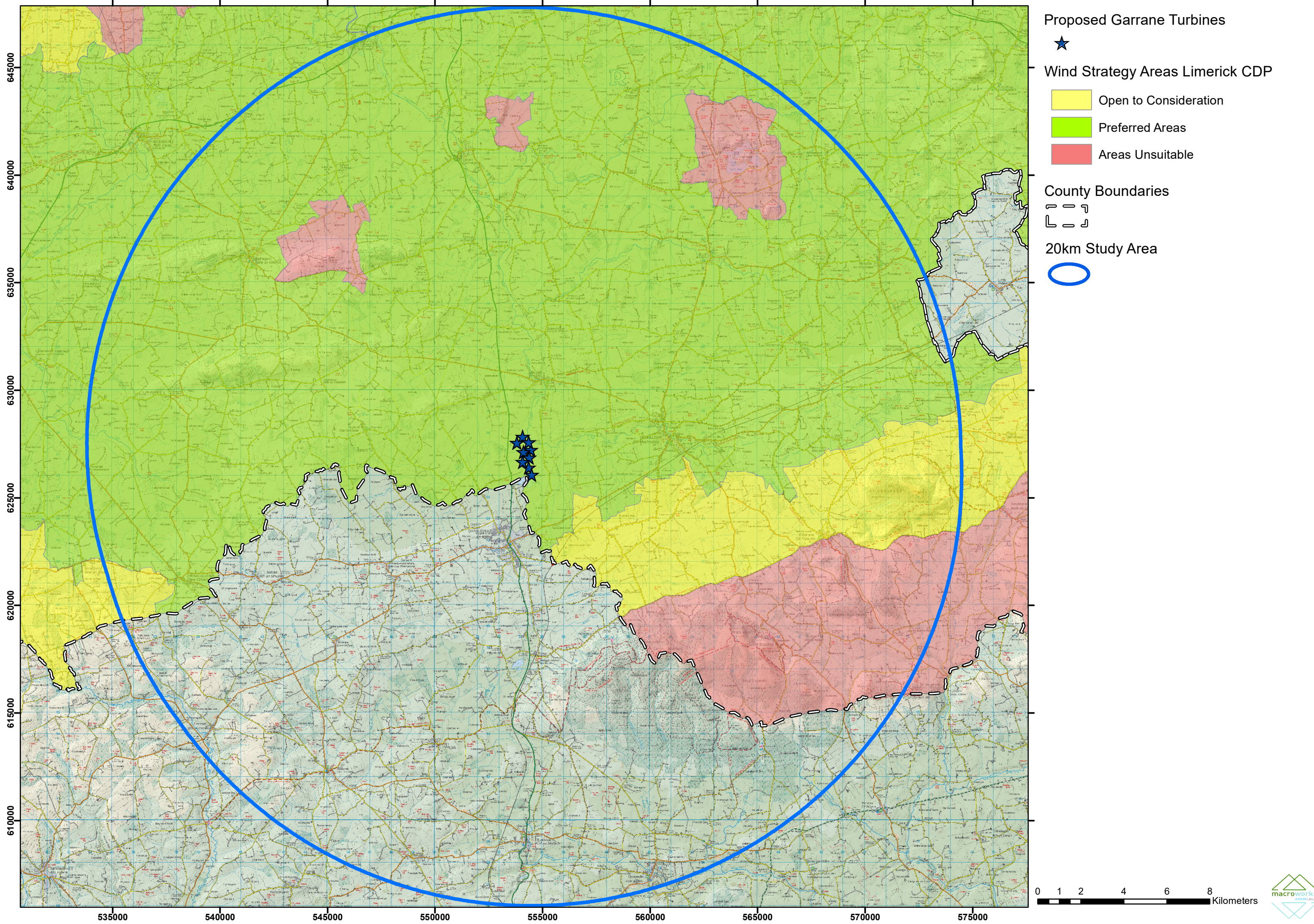


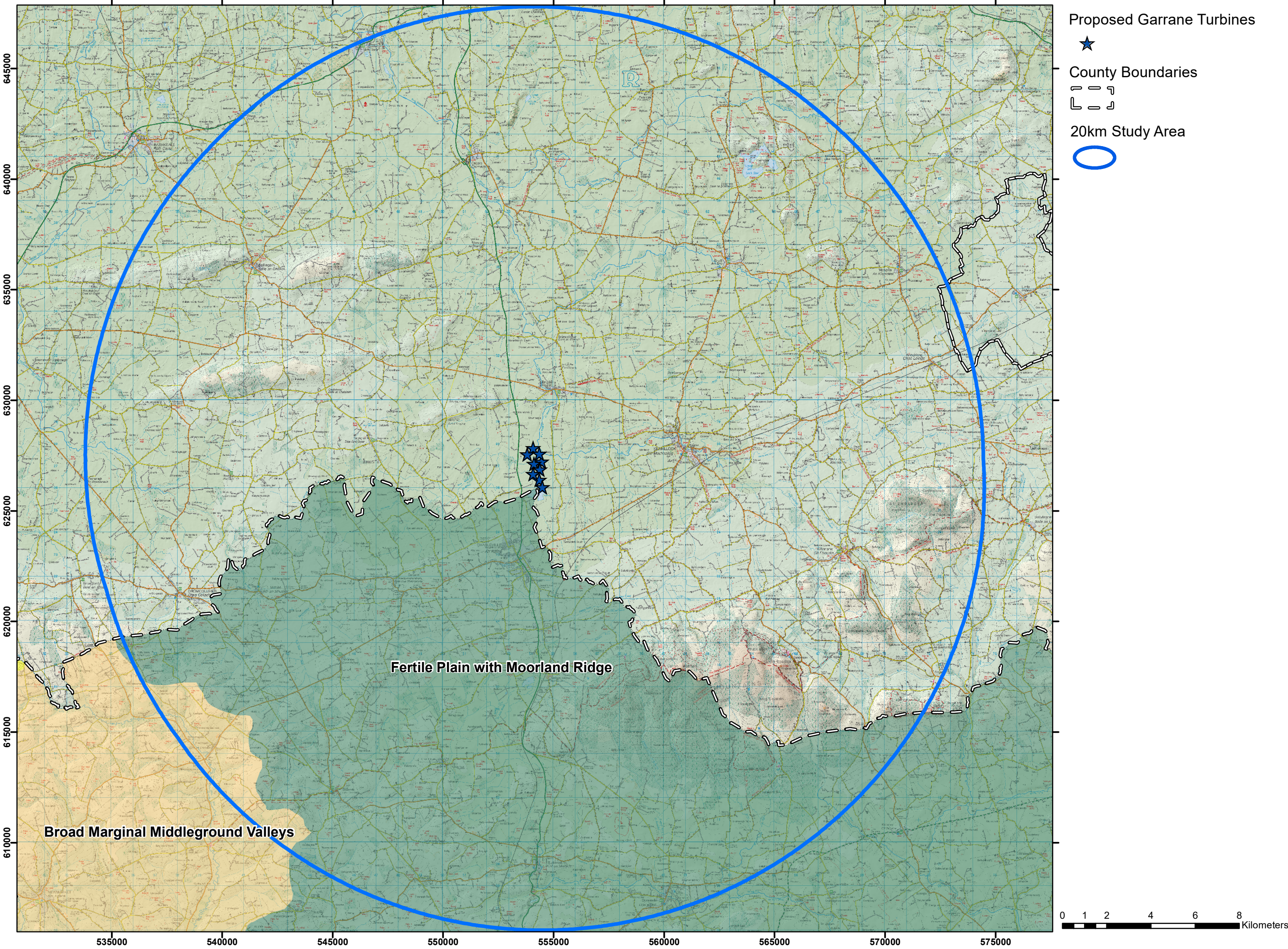
Figure 12.2 Limerick CDP Designated Views and Prospects



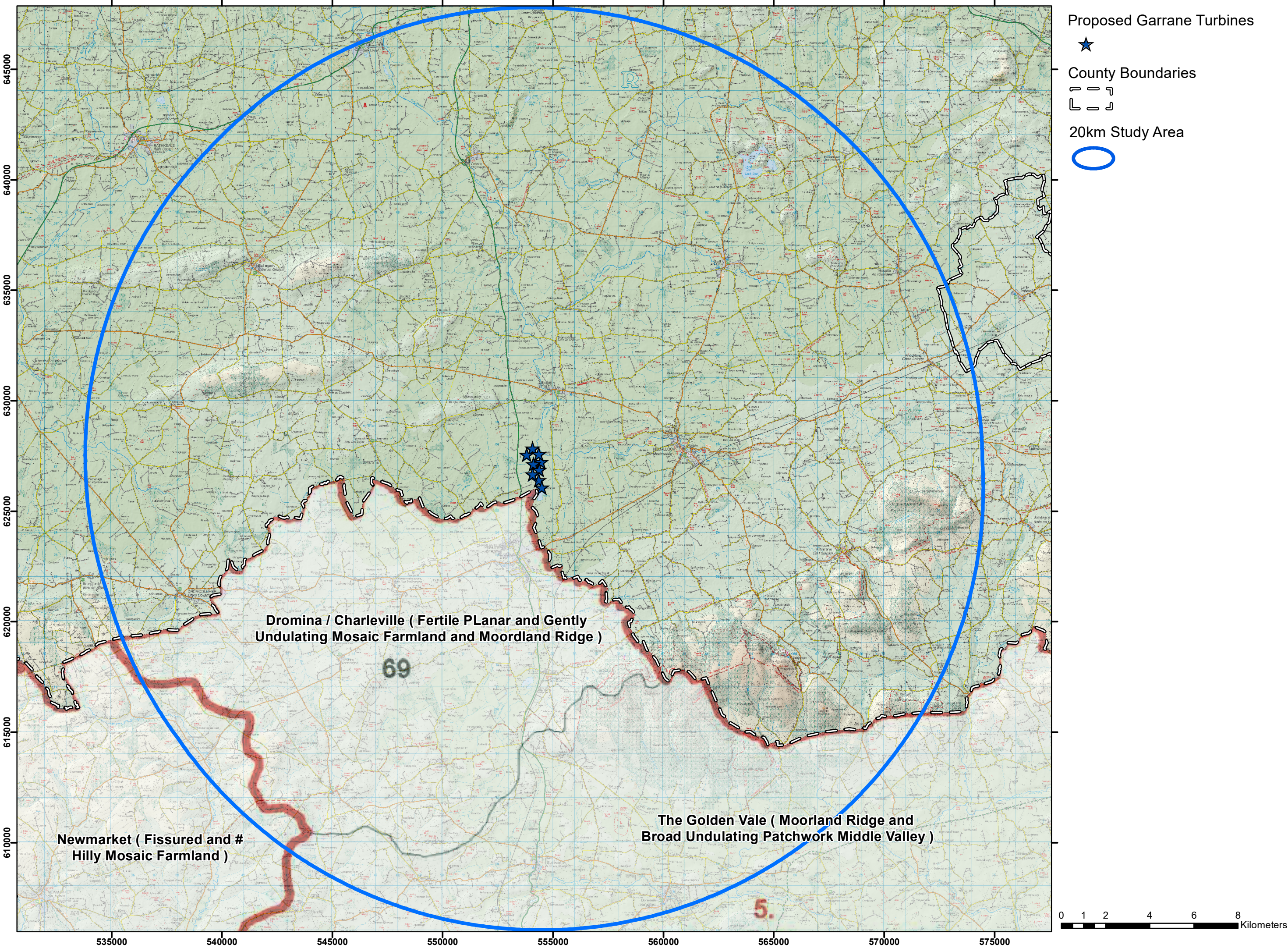
12.3 - Limerick CDP Wind Energy Strategy Map



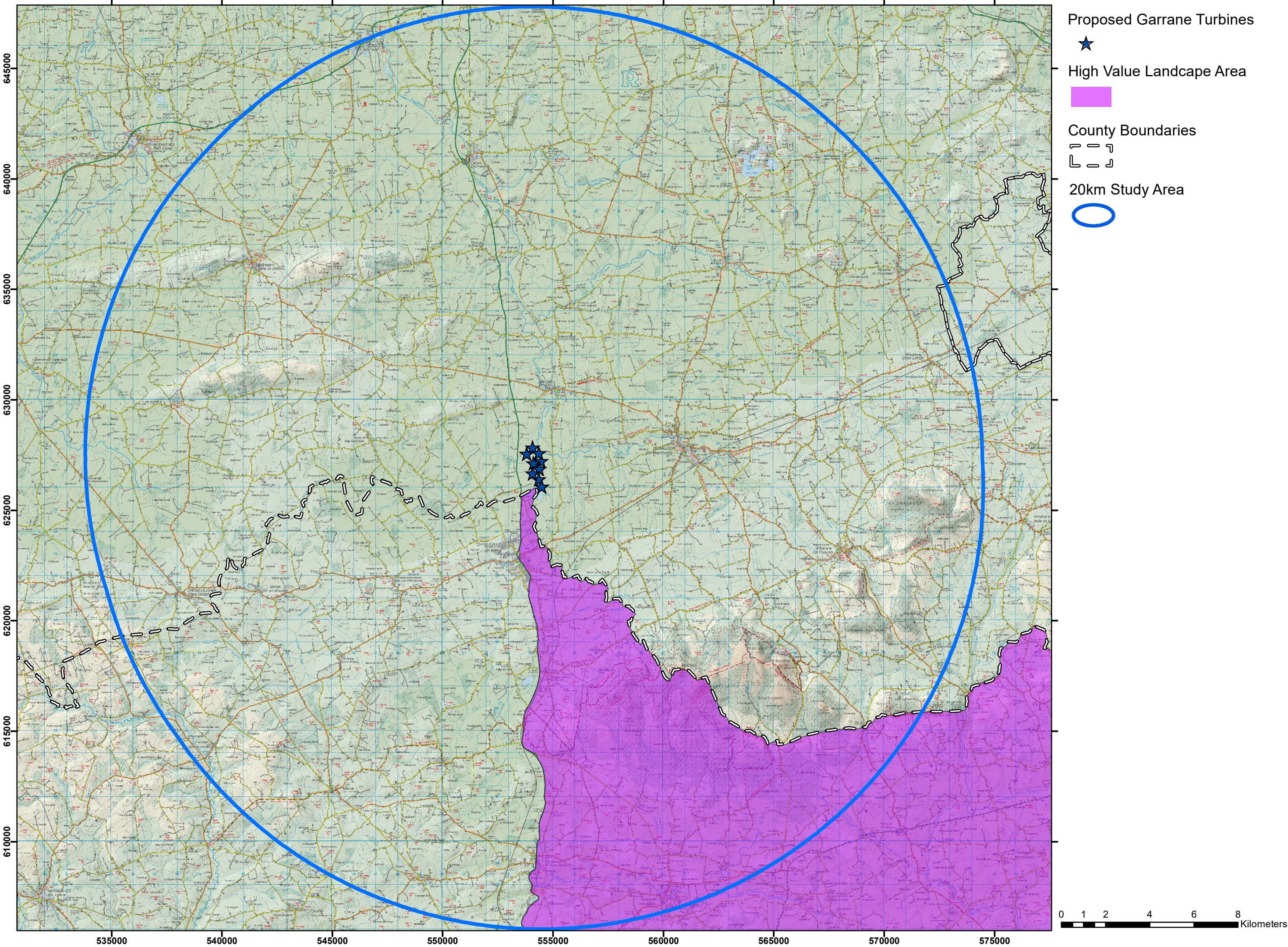
12.4 - Cork CDP Landscape Character Types



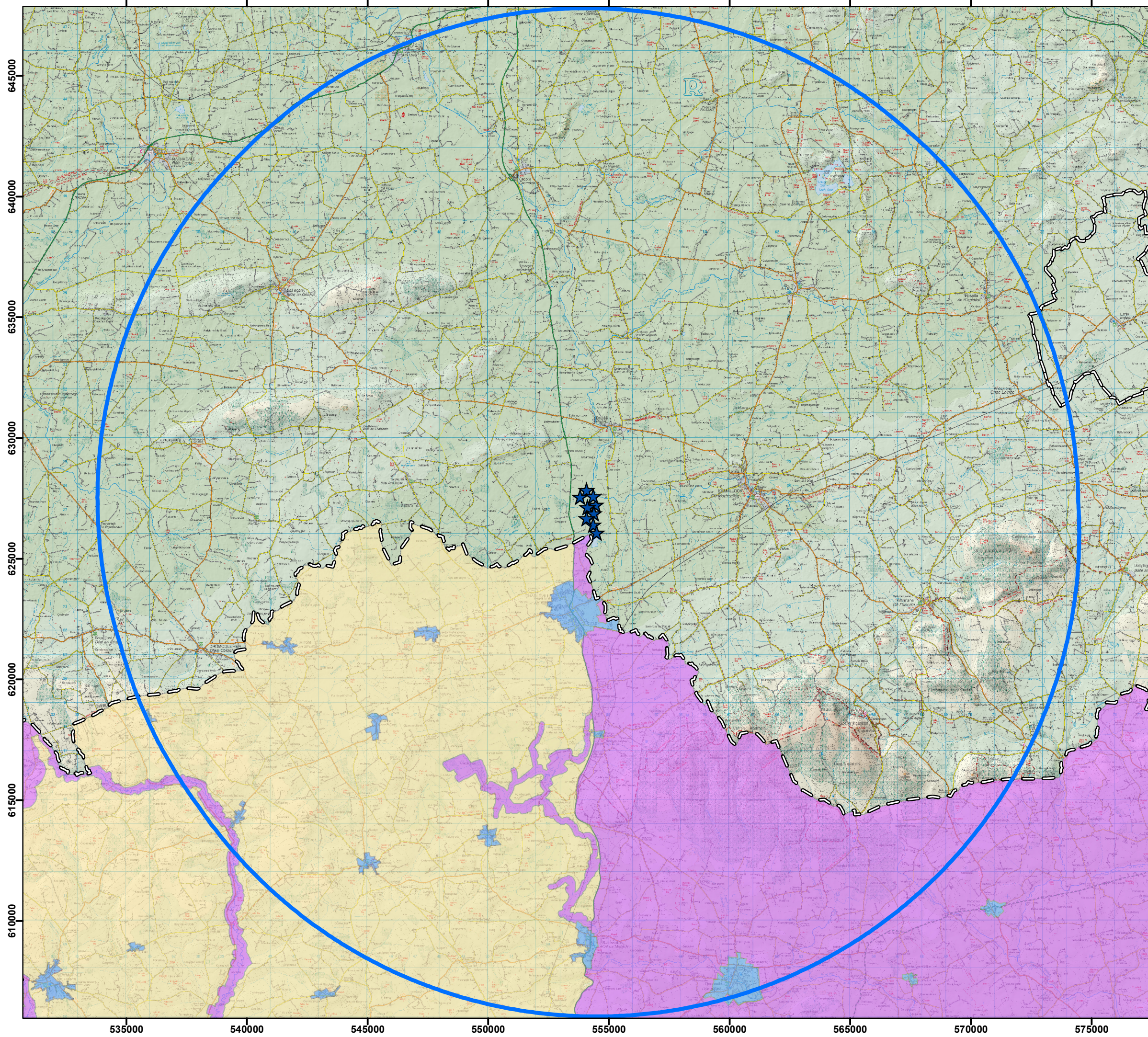
12.5 - Cork CDP Landscape Character Areas



12.6 - Cork CDP High Value Landscapes



12.7 - Cork CDP Wind Energy Strategy Map



Proposed Garrane Turbines



Wind Strategy Areas Cork CDP



Acceptable in Principle



Normally Discouraged



Open to Consideration

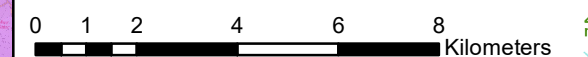


Urban Areas

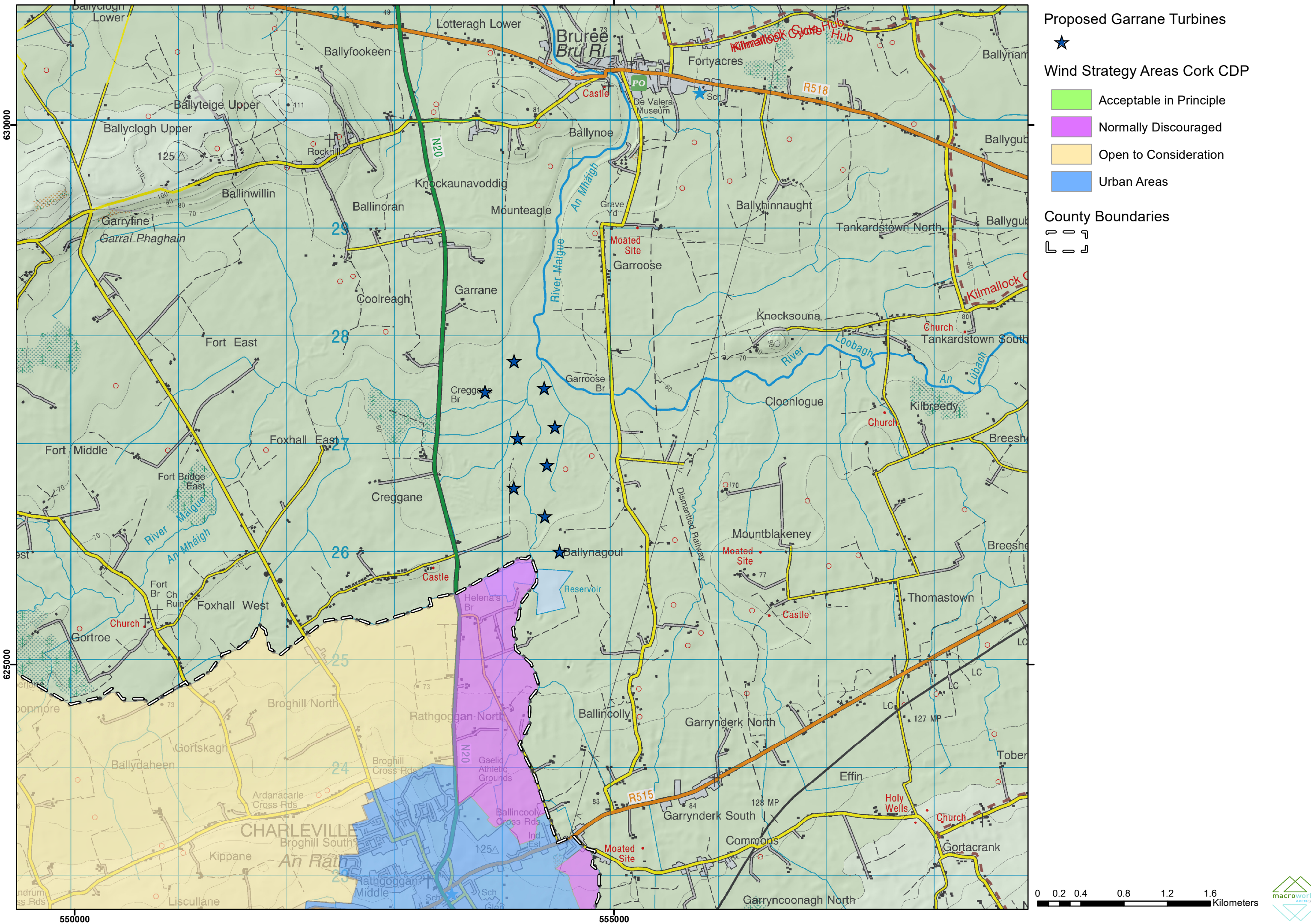
County Boundaries



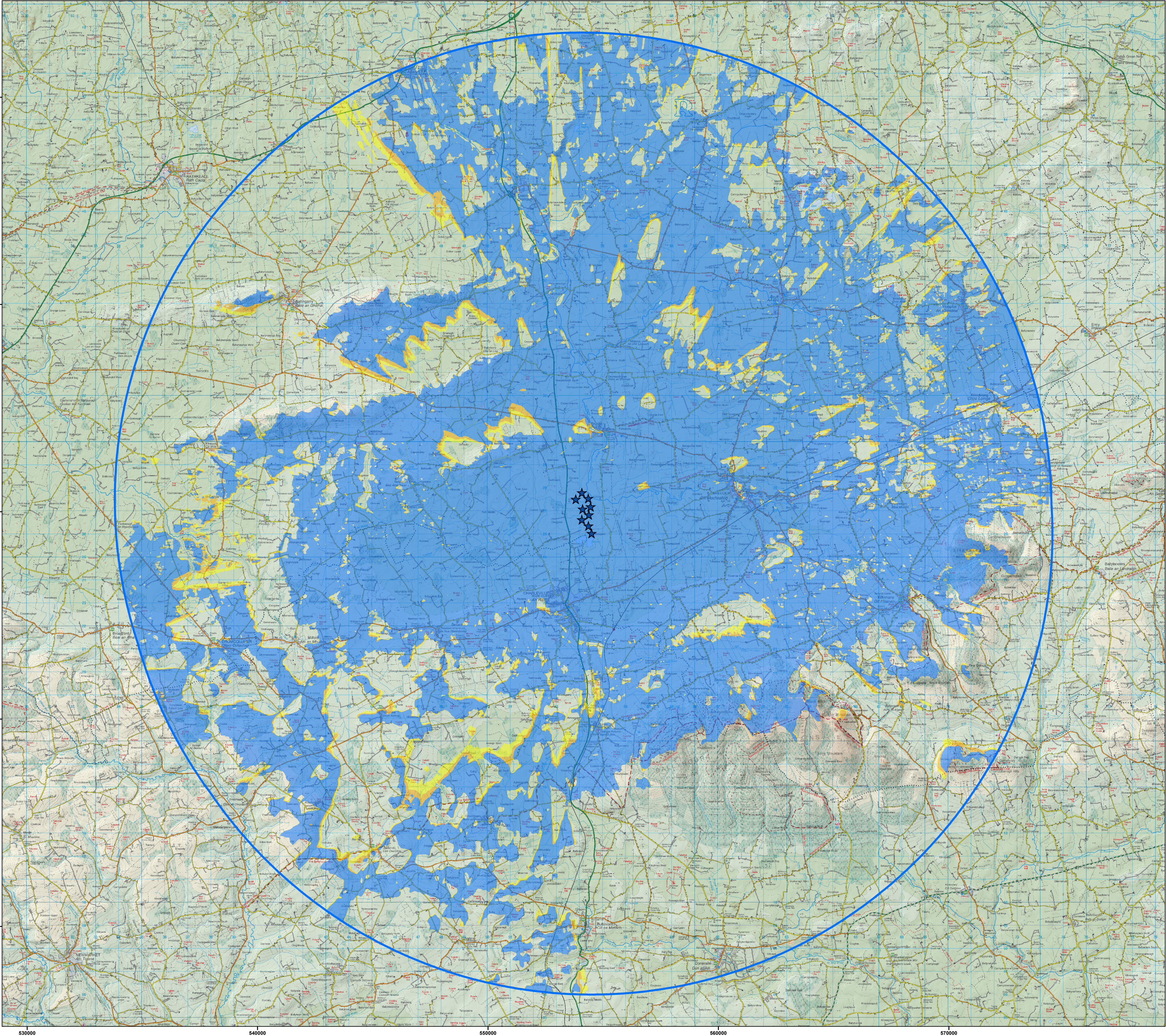
20km Study Area



12.8 - Cork CDP Wind Energy Strategy Map (zoomed excerpt)



12.9 ZTV (Zone of Theoretical Visibility) indicating the areas that have a potential view of the proposed turbines at Garrane Wind Farm (Tip Height 170m)



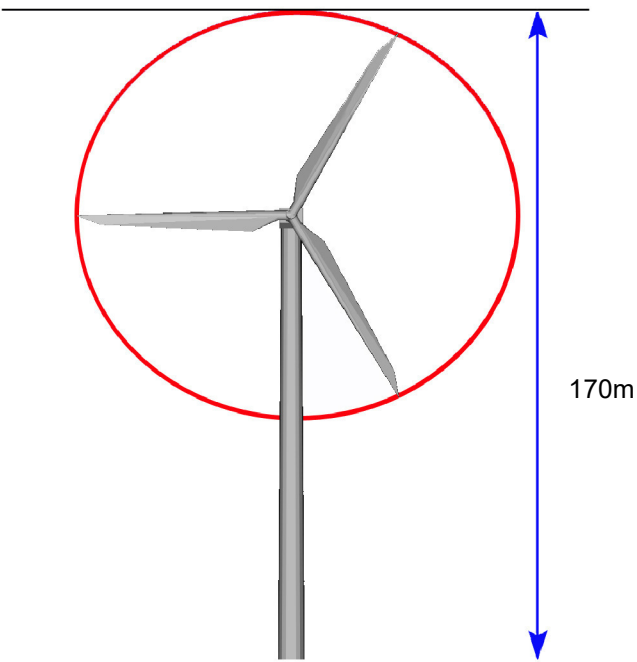
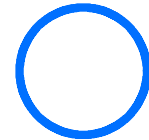
Proposed Turbines



No. Turbines Visible



20km Extent



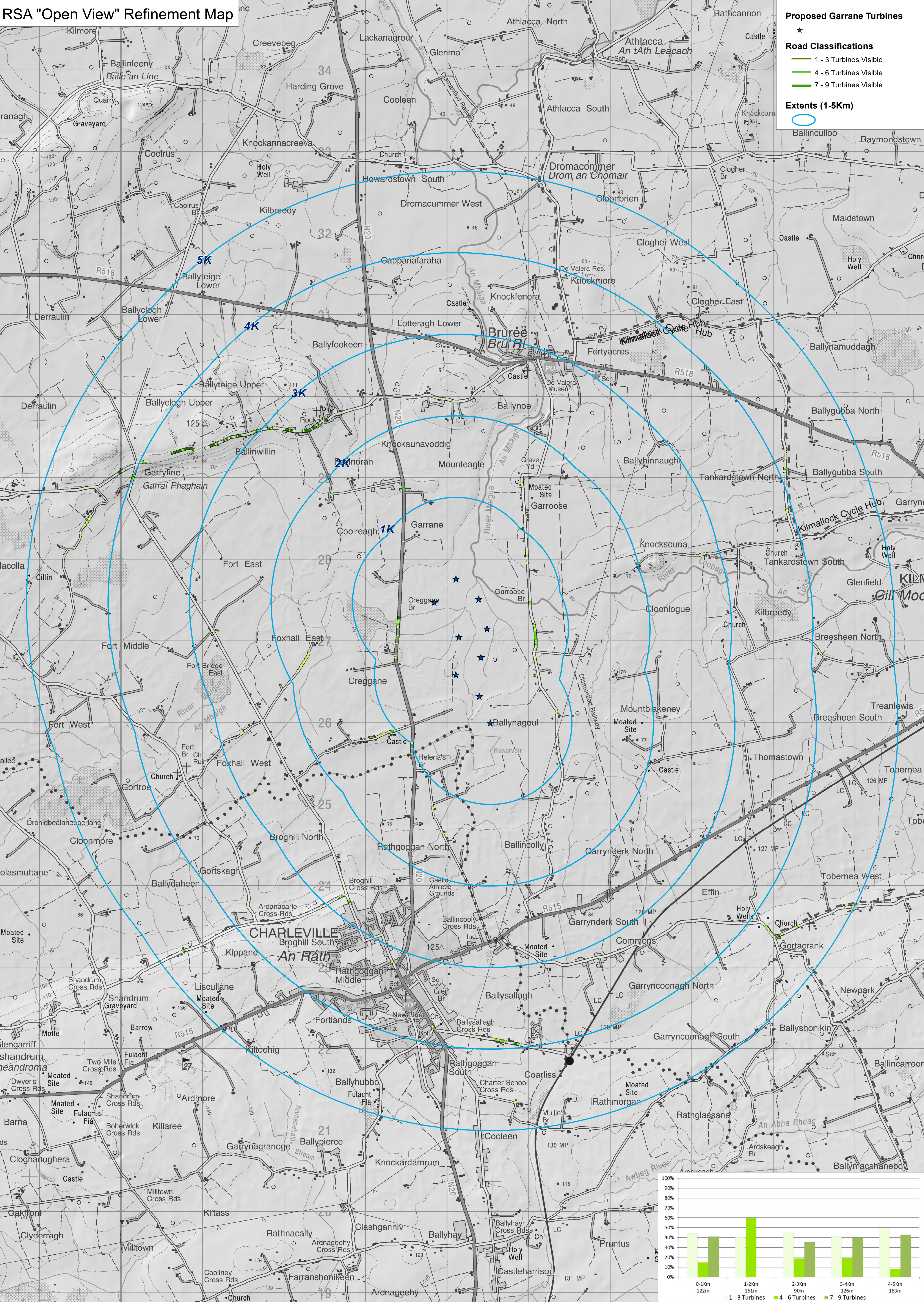
This ZTV map is based on the potential to see any part of the proposed turbine/s from the tip to base in a theoretical bare-ground scenario i.e. without accounting for screening by vegetation and/or buildings.

Observer Height assumed: 1.7m to eye-level height
Tip Height: 170m

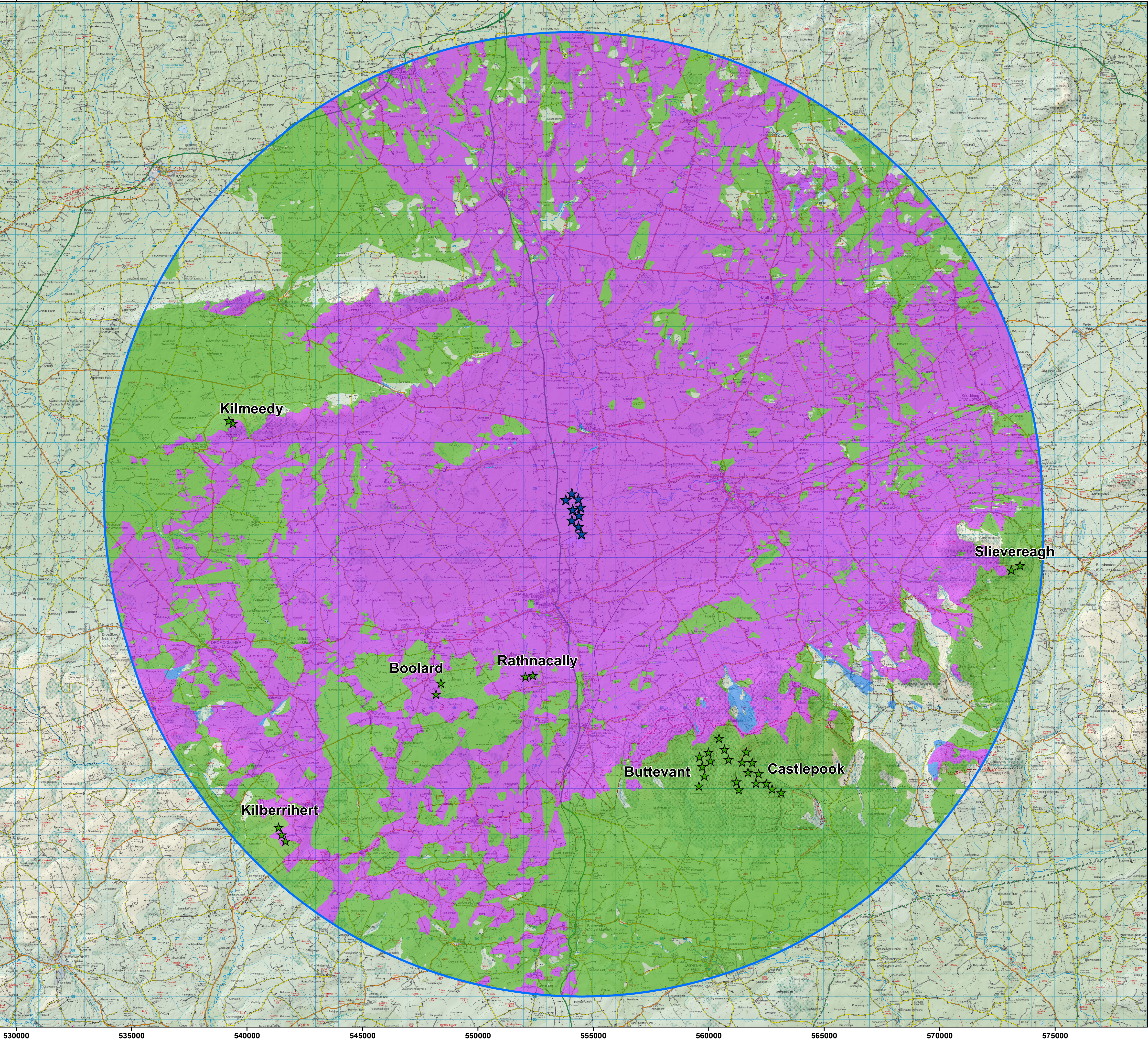
Scale: 1:80,000 if printed @ A1 size



12.11 - Route Screening Analysis - further 'Open View' Analysis Map



12.12 - ZTV indicating the cumulative theoretical visibility of the proposed Garrane Wind Farm in combination with existing cumulative scenario



Proposed Turbines

★

Existing Turbines

★

Wind Farm Visibility

37.6% *Visibility of existing turbines only*

55.8% *Visibility of proposed turbines as well as existing turbines*

0.4% *Visibility of proposed turbines only*

6.2% of the entire study area to 20km will not have any view of the turbine blades of the proposed Wind Farm or that of any existing wind farms

20km Extent

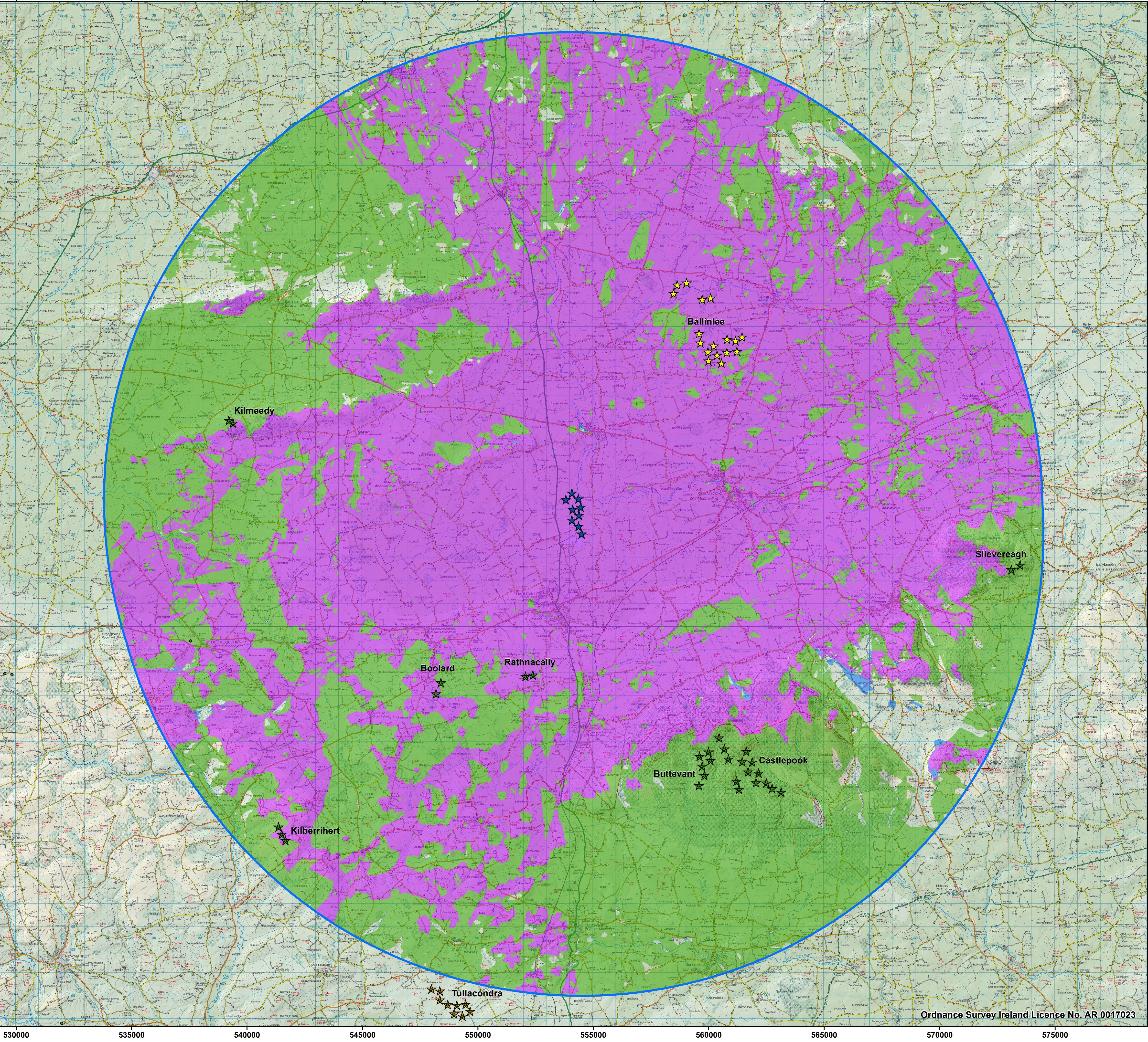
○

This ZTV map has been calculated such that a turbine registers as been theoretically visible to observers in the surrounding landscape once there is an unobstructed line of sight to its blade tip.

Observer Height assumed: 2m to eye-level height
Blade Tip Heights: Variable

Note: This ZTV map is calculated for landform screening only and does not take account of the significant screening effects of vegetation (hedgerows, trees) and buildings inherent across the study area.

12.13 - ZTV indicating the cumulative theoretical visibility of the proposed Garrane Wind Farm in combination with the potential future cumulative baseline wind farms



Proposed Turbines



Existing Turbines



In-Planning Turbines



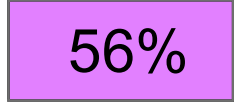
Pre-Planning Turbines



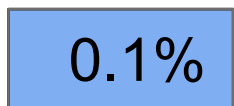
Wind Farm Visibility



Visibility of existing, n-Planning or Pre-Planning turbines only



Visibility of proposed turbines as well as existing, In-Planning or Pre-Planning turbines



Visibility of proposed turbines only

4.2% of the entire study area to 20km will not have any view of the turbine blades of the proposed Wind Farm or that of any existing, In-Planning or Pre-Planning wind farms

20km Extent



This ZTV map has been calculated such that a turbine registers as been theoretically visible to observers in the surrounding landscape once there is an unobstructed line of sight to its blade tip.

Observer Height assumed: 2m to eye-level height
Blade Tip Heights: Variable

Note: This ZTV map is calculated for landform screening only and does not take account of the significant screening effects of vegetation (hedgerows, trees) and buildings inherent across the study area.

Figure 12.14 Viewpoint locations selected for the Garrane Wind Farm project

